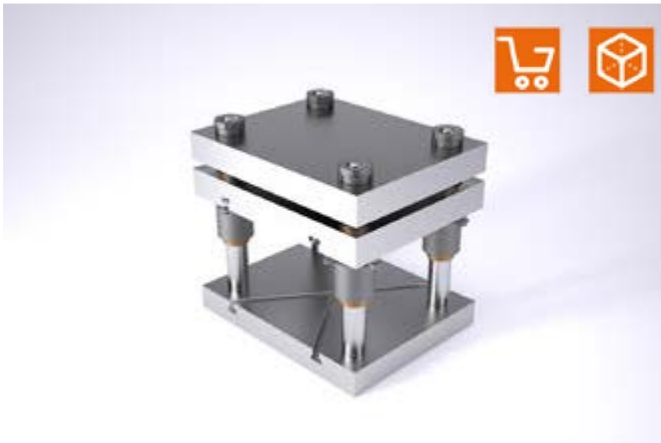
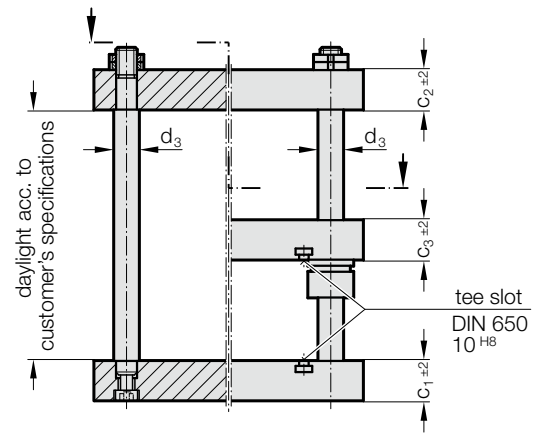


# DIE SET PRESS UNIT

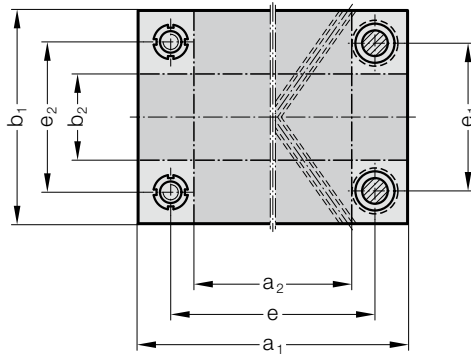


2011.45.

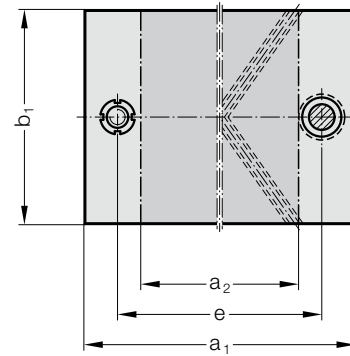
2011.49.



2011.49.



2011.45.

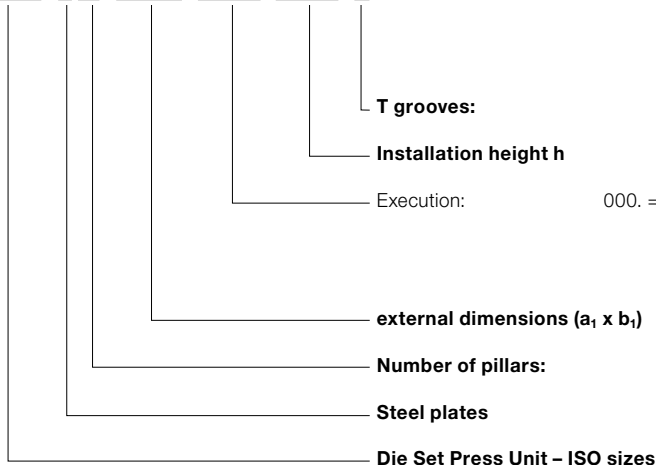


## 2011.4x. Die set press unit

Order No	Work area		max. press thrust kN	a <sub>1</sub>	b <sub>1</sub>	c <sub>1</sub>	c <sub>2</sub>	c <sub>3</sub>	d <sub>3</sub>	e	e <sub>1</sub>	e <sub>2</sub>
	a <sub>1</sub> x b <sub>2</sub>	a <sub>1</sub> x b <sub>2</sub>										
2011.4□.2020.□□□□.□□□□.□	84 x 200	200 x 62	20	200	200	32	32	32	25	132	132	129
2011.4□.2520.□□□□.□□□□.□	134 x 200	250 x 62	20	250	200	32	32	32	25	182	132	129
2011.4□.2525.□□□□.□□□□.□	118 x 250	250 x 97	40	250	250	40	40	40	32	174	174	171
2011.4□.3125.□□□□.□□□□.□	185 x 250	315 x 97	40	315	250	40	40	40	32	239	174	171
2011.4□.3131.□□□□.□□□□.□	183 x 315	315 x 162	40	315	315	40	40	40	32	239	239	236
2011.4□.4031.□□□□.□□□□.□	268 x 315	400 x 162	80	400	315	50	50	50	32	324	239	236
2011.4□.4040.□□□□.□□□□.□	268 x 400	400 x 247	80	400	400	50	50	50	32	324	324	321

## Ordering Code (principle):

**2011.4□.4031.□□□□.□□□□.1**



Coupling spigots and -holders between cylinder and tool: see next page but one.

.0 = without

.1 = in top bolster and intermediate plate

000. = without guide bolster

001. = without guide bolster – tension rod not hardened

831. = Guide bolster with plain bearing

862. = Guide bolster with ball bearing guide

40: a<sub>1</sub> = 400 mm; 31: b<sub>1</sub> = 315 mm

5. = two guide pillars

9. = four guide pillars