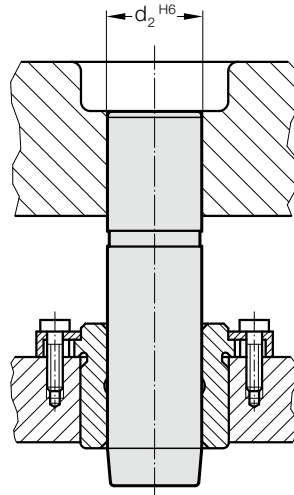


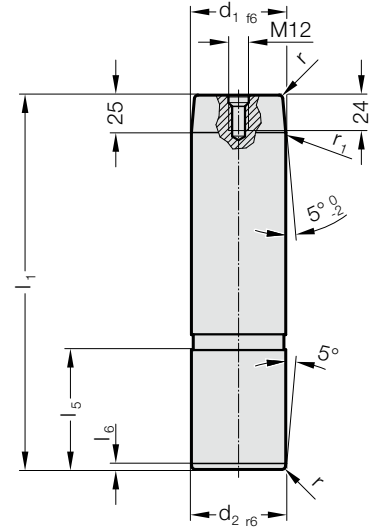
GUIDE PILLAR WITH 5° PILOT TAPER, TO VW-STANDARD



Mounting example



2022.13.



Material:

Steel, surface hardened
Surface hardness: 60 + 4 HRC, Hardness penetration 1,5 + 1 mm

Execution:

precision ground
ø d₁ = 80 with 1 lifting thread M12

Note:

Guide pillar is recommended to be used only with guide elements with solid lubricant.

☞ Matching guide combinations, see selection matrix at the beginning of chapter D.

☞ Assembly guide lines / Dimensional requirements and tolerances at the end of chapter D.

Application:

Floating support in upper half of trimming tools.

2022.13. Guide pillar with 5° pilot taper, to VW-Standard

	40	50	63	80
d ₁	40	50	63	80
d ₂	40	50	63	80
l ₅	56	70	80	100
l ₆	4	4	4	4
r	2	2,5	2,5	3
r ₁	3	5	6	8
l ₁				
140	●			
160	●	●		
180	●	●	●	
200	●	●	●	
224	●	●	●	●
250	●	●	●	●
280	●	●	●	●
315		●	●	●
355		●	●	●
400			●	●

Ordering Code (example):

Guide pillar with 5° pilot taper, to VW-Standard	=	2022.13.
Diameter of conduit d ₁	63 mm =	063.
Length l ₁	180 mm =	180
Order No	=	2022.13. 063. 180