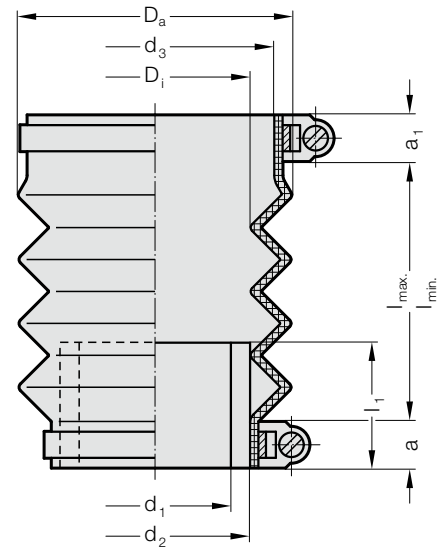


CONCERTINA SHROUD WITH SPACER BUSH



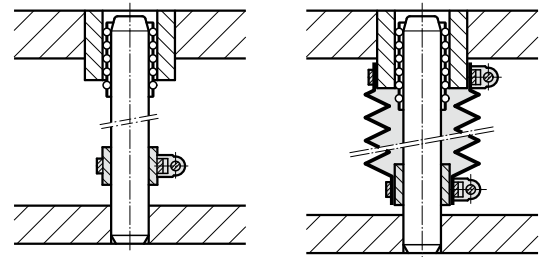
206.91.



Note:

Concertina Shrouds are supplied complete with spacer bush and two hose clamps.
Special sizes on request.

Mounting example



206.91. Concertina shroud with spacer bush

for guide bushes	2051.	2061.	2051.	2061.	2051.	2061.	2051.	2061.	2051.	2061.	2051.	2061.	2081.	2081.	2081.	2081.	2081.	2081.	2081.					
Pillar- \varnothing d_1	19	20	24	25	30	32	38	40	48	50	60	63	19	20	24	25	30	32	38	40	48	50	60	63
d^*	20	25	32	38	40	50	60	63	76	76	76	76	39	45	54	63	74	94	94	94	94	94	94	94
d_2	25	30	40	50	60	70	70	70	25	30	40	50	60	70	70	70	70	70	70	70	70	70	70	70
d_3	32	38	46	55	64	76	76	76	39	45	54	63	74	94	94	94	94	94	94	94	94	94	94	94
d_4^{**}	32	38	48	58	68	79	79	79	40	45	54	66	80	95	95	95	95	95	95	95	95	95	95	95
D_1	30	30	46	55	62	75	75	75	32	32	45	52	62	75	75	75	75	75	75	75	75	75	75	75
D_a	51	56	72	87	86	100	100	100	54	56	63	96	84	104	104	104	104	104	104	104	104	104	104	104
a	13	13	20	12	12	12	12	12	10	10	10	12	12	10	10	10	10	10	10	10	10	10	10	10
a_1	16	13	20	12	12	10	10	10	10	10	10	12	12	10	10	10	10	10	10	10	10	10	10	10
l_1	20	30	30	40	40	40	40	40	20	30	30	40	40	40	40	40	40	40	40	40	40	40	40	40
l_{min}	30	25	20	44	25	30	30	30	37	35	35	25	45	35	35	35	35	35	35	35	35	35	35	35
l_{max}	170	130	100	119	110	130	130	130	145	110	110	225	165	185	185	185	185	185	185	185	185	185	185	185

* d = Nominal diameter, ** d_4 = Nominal ordering diameter for flange diameter

Ordering Code (example):

Concertina shroud with spacer bush	=	206.91.
Nominal diameter d	20 mm =	020.
Nominal order diameter for flange connection diameter d_4	40 mm =	040
Order No	=	206.91. 020. 040